

PRODUCT INFORMATION

Catalog Number

ACL0711

Clone No.

1A11

Product type

Monoclonal Antibody

UniProt No.

P10909

NCBI Accession No.

NP_001822

Alternative names

Clusterin, ApoJ, clusterin (complement lysis inhibitor SP-40,40, sulfated glycoprotein 2 testosterone-repressed prostate message 2 apolipoprotein J), SGP-2, SP-40, TRPM-2, KUB1, complement lysis inhibitor, ulfated glycoprotein 2, testosterone-repressed prostate message 2, apolipoprotein J

PRODUCT SPECIFICATION

Antibody Host

Mouse

Reacts With

Human

Concentration

1mg/ml

Formulation

Liquid. In Phosphate-Buffered Saline (pH 7.4) with 0.02% Sodium Azide, 10% Glycerol.

Immunogen

Recombinant human Clusterin (1-333aa) purified from E. coli

Isotype

IgG1 kappa

Purification Note

By protein-G affinity chromatography

Application

ELISA,WB,FACS,ICC/IF,IHC

Usage

The antibody has been tested by ELISA, Western blot and immunohistochemistry analysis to assure specificity and reactivity. Since application varies, however, each investigation should be titrated by the reagent to obtain optimal results. Recommended dilution range for Western blot is 1:500 ~ 1:2,000 and immunohistochemistry analysis is 1:100~200. Recommended starting dilution for Western blot is 1:1,000 and Immunohistochemistry is 1:100.

Storage

Can be stored at +2C to +8C for 1 week. For long term storage, aliquot and store at -20C to -80C. Avoid

repeated freezing and thawing cycles.

BACKGROUND

Description

Clusterin has been implicated in numerous processes including active cell death, immune regulation, cell adhesion and morphological transformation. Clusterin (previously named SP-40) is a glycoprotein, 80kDa comprising two distinct 40kDa polypeptide chains. It shows marked similarity, both physicochemically and in immunohistological distribution, to the single chain, 80kDa, Sprotein, an additional component of the SC5b-9 complex. Clusterin is a secreted glycoprotein of which the exact function remains a matter for speculation.

General References

Maximino R et al., (2000) Am J Pathol 157(2):393-399

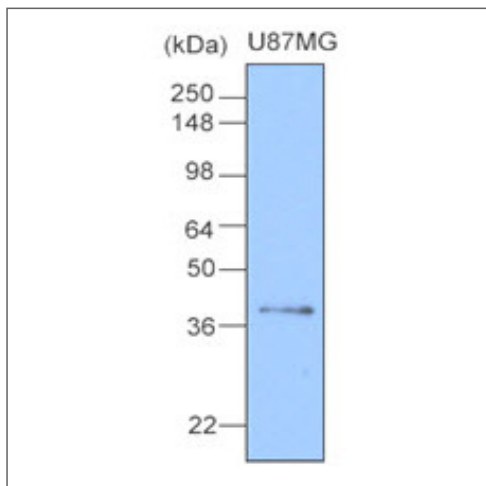
Ingrid C.G et al., (1998) Biochem J 331:231-237

Maximino R et al., (1990) J Clin Invest 85:1477-1486

Fabien L et al., (2006) Biochem J 395(1):223-231

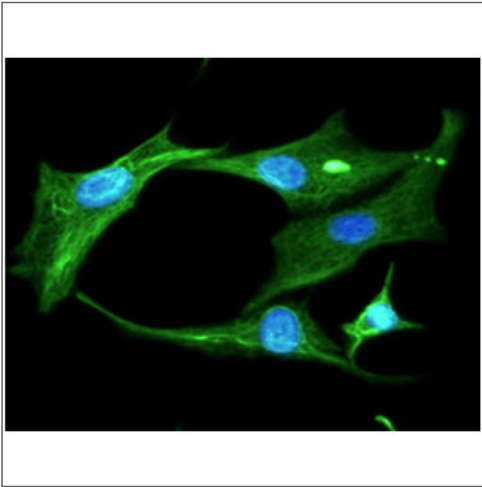
DATA

Western blot analysis (WB)



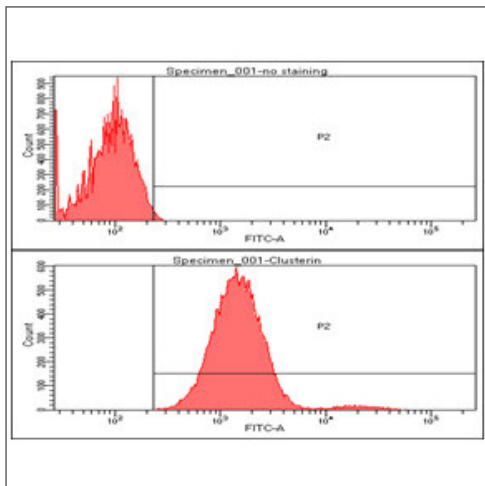
Cell lysates of U87MG(20ug) were resolved by SDS-PAGE, transferred to NC membrane and probed with anti-human Clusterin (1:1000). Proteins were visualized using a goat anti-mouse secondary antibody conjugated to HRP and an ECL detection system.

Immunofluorescence (ICC/IF)



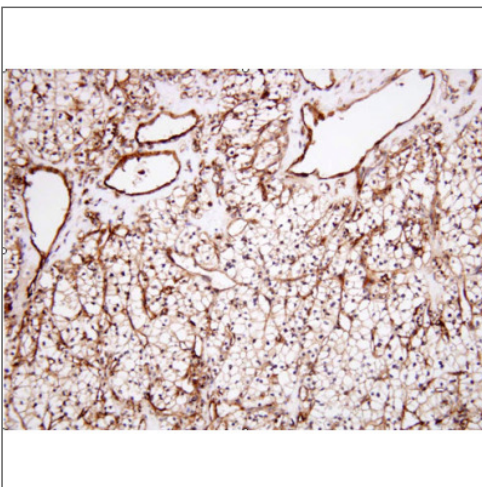
ICC/IF analysis of Clusterin in U87MG cells line, stained with DAPI (Blue) for nucleus staining and monoclonal anti-human Clusterin antibody (1:100) with goat anti-mouse IgG-Alexa fluor 488 conjugate (Green).

Flow cytometry (FACS)



Flow cytometry analysis of Clusterin in U87MG cell line, staining at 2-5ug for 1x10⁶ cells. The secondary antibody used goat anti-mouse IgG Alexa fluor 488 conjugate.

Immunohistochemistry (IHC)



Paraffin embedded sections of human renal cell carcinoma tissue were incubated with anti-human Clusterin (1:100) for 2 hours at room temperature. Antigen retrieval was performed in 0.1M sodium citrate buffer and detected using Diaminobenzidine (DAB)